

H. Gerstner & Sons

Style 52A Kit Chest



Wood and Hardware

Top (5 Pieces)	Birch plywood Stringer	(1) Nameplate with brads
Back	Front Lid (5 Pieces)	(3) Finish Nails
Right & left sides	(20) Maple drawer slides	(2) Felt Dots
Front Rail	(8) Box corners w/screws	(1) Front Lid Lock
Bottom with cap	(13) Drawer knobs	(2) Chest Catches
Top Partition	(1) Chest Lock w/key	(2) Hinges
(2) Short Partitions	(2) Lid slide plates w/ nails	(2) Side Handles
Solid Wood Stringer	(2) Steel rod lid pins	(1) Mirror & Frame

52A Drawer Parts

(6 Pair) 1-7/16" high – right & left sides (poplar)	(1) 2-7/16" high – long backs (poplar)
(4) 1-7/16" high – short backs (poplar)	(2) 2-1/2" high – short drawer fronts (oak)
(2) 1-7/16" high – long backs (poplar)	(1) 2-1/2" high – long drawer fronts (oak)
(4) 1-1/2" high – short drawer fronts (oak)	(1 Pair) 4-1/2" high – right & left sides (poplar)
(2) 1-1/2" high – long drawer fronts (oak)	(1) 4-1/2" high – backs (poplar)
(3 Pair) 2-7/16" high – right & left sides (poplar)	(1) 4-9/16" high – drawer fronts (oak)
(2) 2-7/16" high – short backs (poplar)	

Recommended tools

#2 Philips screw driver	Router with flush cut bearing bit	Drawer bead bit if desired
Wood glue	3/16" round over bearing bit	Paraffin wax
Rubber Mallet/Hammer	(4) 24" clamps	90 degree square
100 and 150 grit sandpaper	Electric drill	Your Choice of Stain/Finish

Please Note: If you are not going to start building the chest right away, you will need to weight down the parts. The parts are unfinished and can warp if left in the box for extended periods of time. Gerstner is not responsible for replacing warped parts 15 days after receipt.

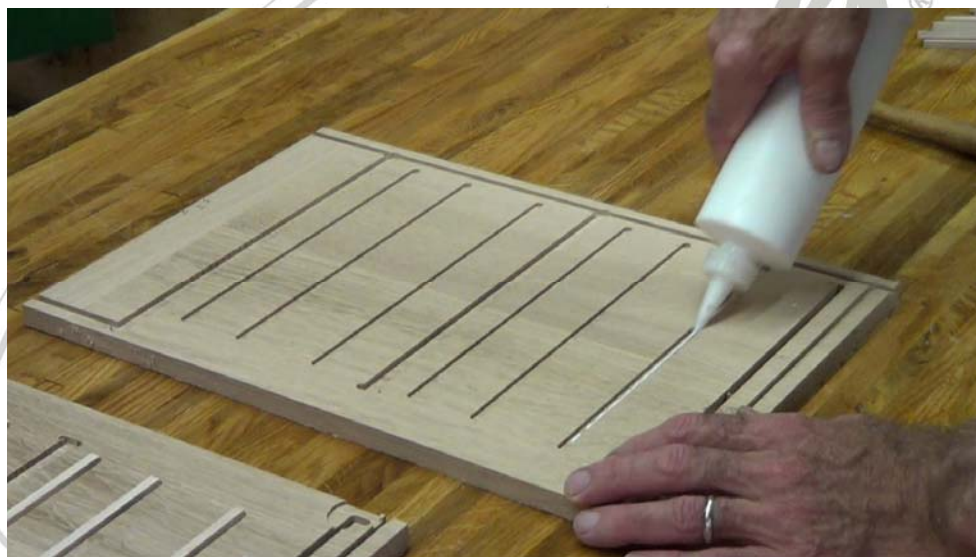
52A Kit Chest - Assembly Instructions

Parts prep before starting the job

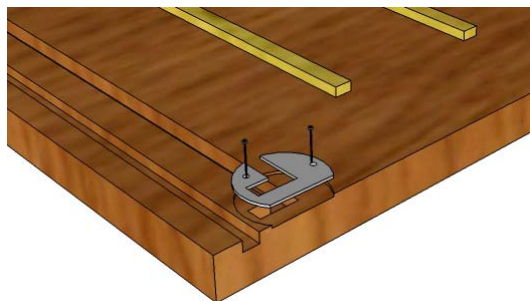
Make sure you are working on a sturdy flat work surface that will not scratch or dent your parts while handling them. Lightly sand the part edges so that they are free from burs and splinters. Always clean excess glue off of your parts with a damp rag as this will make final sanding and finishing after assembly easier.

Chest Sides

1. Install the drawer slides: Glue the maple drawer slides in the grooves on the side. Align the maple drawer slide so the spray-painted black edge of the slide is facing toward the bottom edge of the side. The maple drawer slides should be aligned 1-1/2" from the front edge of the side. The maple drawer slides are a snug fit in the groove and a little extra sanding/fitting may be needed. Use glue lightly and use a hammer/rubber mallet to tap the slides into the grooves.



2. Install the Lid Slide Plate w/nails on each side.



Drawer Partitions

Glue the Maple Drawer Slides in the grooves of the Birch Plywood Small Partitions with Cap. Align the maple drawer slide so the painted black edge of the slide is facing toward the bottom edge of the Partition. The maple drawer slides should be aligned 1/2" from the front edge of the Partition. If the maple drawer slides are tight in the groove, use a rubber mallet to tap the slides into the grooves. Flip the partition over and repeat.



Partition Assembly

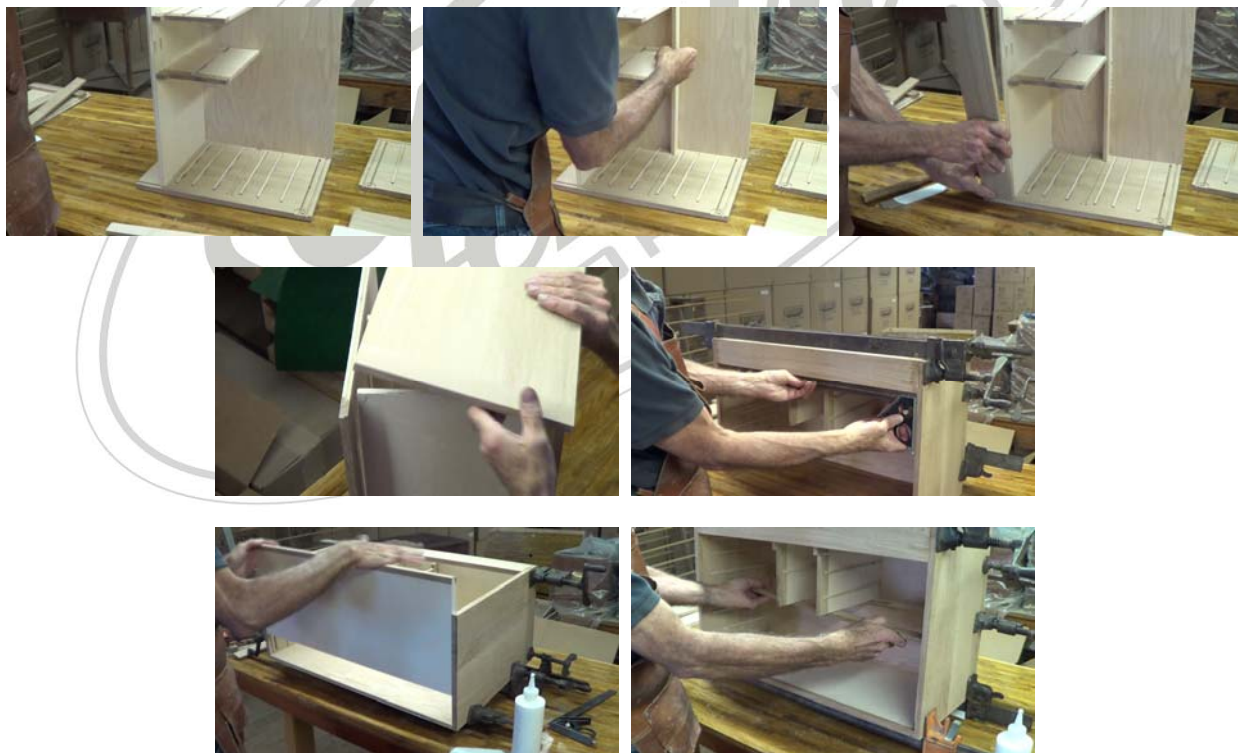
The top partition has a tongue along the front edge. Glue the small partitions with the solid wood cap facing the front edge of the top partition. (Make sure the single drawer slides on the small partitions are facing toward each other). Use a square to make sure the partition will hang straight in the chest. The 3 notches help align the small partitions correctly.



Box Assembly

It is recommended that you pre-assemble the box WITHOUT glue to familiarize yourself with the process.

1. Lay the one side of the chest on your work surface and glue the Back in the Back Groove.
2. Glue the Top Partition in the Top Partition Groove.
3. Glue the Front Rail in the Front Rail Groove.
4. Glue the Birch Plywood Stringer in the Bottom Partition Groove and against the chest Back.
5. At this time the chest Bottom and the Solid Wood Stringer can be added, but it can make lining up the other size more difficult, which is why they were added in later steps.
6. Add glue to the top edges of the exposed parts and then place the other side on top and align each part with the grooves in the side. Use a rubber mallet to tap the side onto the other parts.
7. Clamp the box at the top and the bottom, and check to make sure that the box is square.
8. Use the finish nails to nail the back to the bottom of the chest. **Make sure the bottom of the chest is flat, not bowed in or out from your clamps before you nail the back to the bottom.** You can use a nail set to set the nail flush with the wood.
9. Glue the bottom. The clamps may need to be loosened to make installing the bottom easier.
10. Glue the Solid Wood Stringer in the Bottom Partition Groove. The front edge of the Stringer should be 1" from the front edge of the chest.



Top Assembly

1. Layout the top parts with the good side of the top facing up. Place the parts around the top with the right side on the right, left side on the left and the front and back in the corresponding positions. The parts are identified with the following; RS=Right Side, LS=Left Side, FR=Front Rail & Back. Glue one of the sides to the top. Glue the Front Rail to the top and then repeat for the rest of the parts. Once all parts are glued to the top, clamp the top.



Drawer Assembly

1. Align the top edge of the drawer front with the top edge of the drawer side. Glue the drawer front to the drawer side.
2. Align the top edge of the drawer back with the top edge of the drawer side.
3. Slide the drawer bottom into the bottom groove of the drawer front, back and side. **(The drawer bottom floats in the groove, do not glue into the groove).**
4. Once you have all of the pieces lined up, add glue to the parts and then place the opposite drawer side on top and align each part with the grooves in the side. Use a rubber mallet to tap the side onto the other parts.
5. Clamp the drawer at the front and back of the sides and check to make sure that the drawer is square. Once the drawer is square, let the drawer sit until the glue dries.
6. Repeat for the remaining drawers.



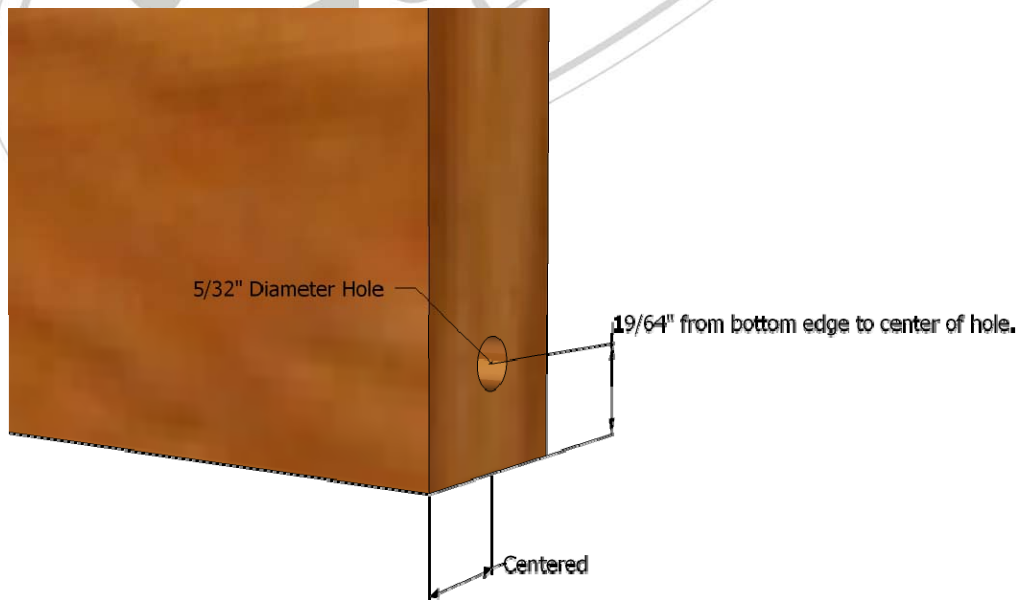
Front Lid Assembly

1. Align the outside edge of the end rail with the outside edge of the bottom rail of the front lid.
2. Put the center panel of the front lid in the groove of the end rail and the bottom rail. The center panel floats in the grooves of the front lid, **do not** glue the panel into place. (The center panel is undersized to allow for expansion and contraction).
3. Align the outside edge of the other end rail with the outside edge of the bottom rail of the front lid.
4. Align the top rail with the outside edges of both of the end rails.
5. Clamp the front lid at the top and bottom at each end rail.



Front Lid Pins

Once the front lid has been fit to the chest, you will need to drill for the Front Lid Pins with a 5/32" diameter drill bit. The locations for the holes are shown below.



Recommended Steps to Sand and Finish your Gerstner® Kit Chest.

1. Flush-up all joinery. This may be done with a flush cut router bit or by hand sanding. Take extra care in flushing-up the chest top and back.*

***CAUTION:** We use veneer plywood on the Top and Back of this chest. This plywood gives the box stability through ever-changing conditions of humidity. Please note that you must exercise great care when sanding the back surface. The veneer is .010" thick and excessive sanding on these areas can cause a sand-through, to the plywood core below the veneer. We suggest you sand the solid wood just enough to meet the surface of the veneer.

2. Round over all edges of the chest as desired. The corner protectors have a 3/16" radius.

3. Fit the drawers to the box making sure that the gaps between the drawers are uniform. Because all wood swells under certain conditions, a drawer fit with minimal clearance is not recommended. **(Gerstner recommends 1/32"-1/16" gap on all sides of the drawer.)**

4. Final sand all parts of your chest to desired grit. **(Gerstner recommends at least 150 grit).** ®

5. Stain and finish the parts as desired. Gerstner stains and then applies 1-2 coats of a lacquer sealer and then 1-2 top coats of lacquer. **(Make sure to use a style finish that you are comfortable working with.)**

6. Cut the felt to fit the box and drawers.

7. Use a 50/50 mix of animal hide glue and water to install the felt. Brush the mixture onto the surface and then carefully press the felt into place.

8. Install hardware on the chest as desired. The 4 rubber bumpers are mounted on the bottom of the chest, using the 4 1/2" screws. The screw goes through the rubber bumper and through the hole in the leg of the bottom corner.

9. Install both lid pins in the front lid. The pins should protrude about 1/8" from the edge of the front lid. The 2 felt dots will be put in the bottom of the chest, 3/4" from the front edge to keep the front lid from rubbing against the bottom of the chest. There is a video on how to install your front lid in your chest. The video can be seen on our website at www.youtube.com/user/gerstner2010.

10. Rub paraffin wax onto the drawers and the inside of the chest to help the drawers glide smoothly.

11. Congratulations, you are finished, now sit back and enjoy a lifetime of use of your new chest.

12. **Check Gerstner & Sons forum for tips, tricks and suggestions about kit chests.** When you are finished don't forget to post a picture of your completed chest on the forum at <http://Forum.GerstnerUSA.com>. We have some video demonstrations of the assembly of the chest to our YouTube Channel at <https://www.youtube.com/user/gerstner2010>.

Have a question? Call us at 937-228-1662.
Ask for Scott or Bert.